



Main Line Health[®]

Proposed Downtown Health Center

September 2024



Main Line Health[®]

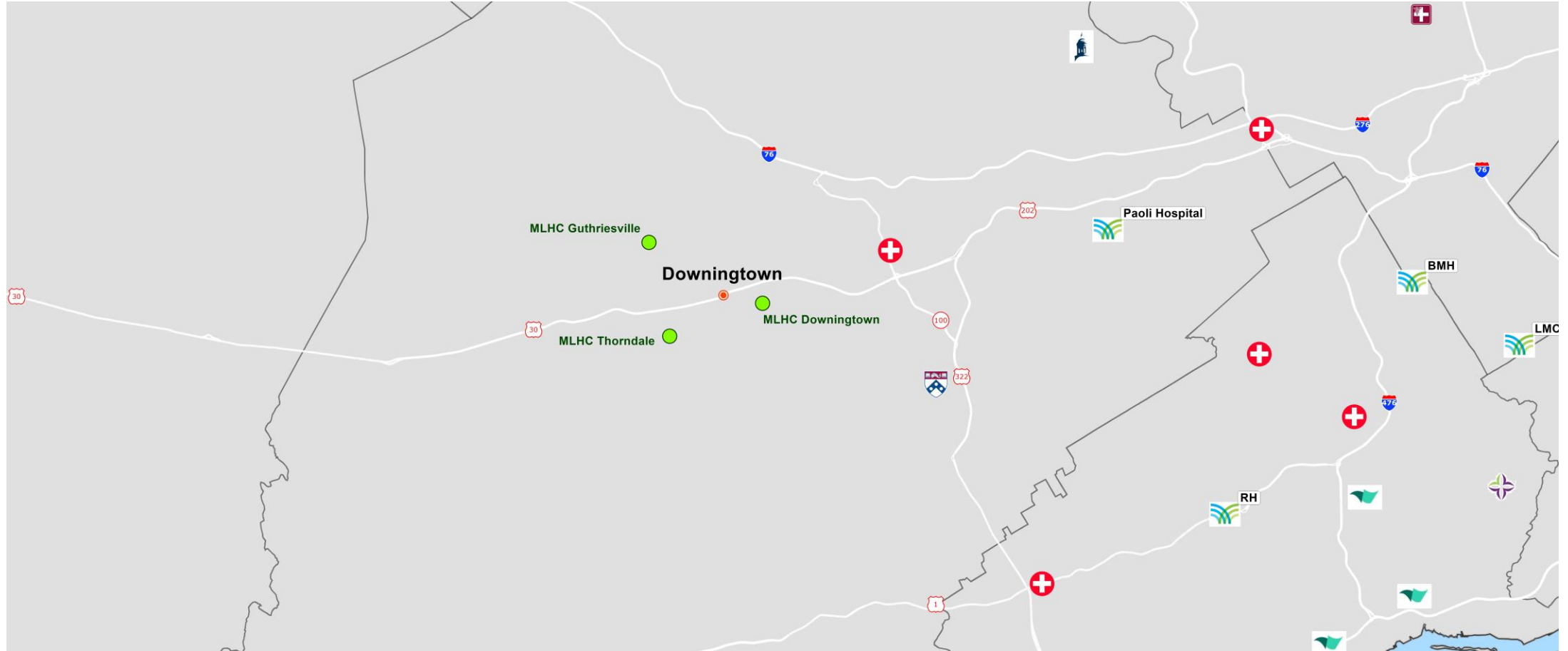
Agenda

- Location
- Local Need
- Included Services
- Roadways and Infrastructure
- Timeline

Corner of Lloyd and Manor Avenues



Regional Hospitals and MLH Health Centers



Meeting the Community's Needs

Underserved

- 38% percentile vs. Other Main Line Health areas

Growing population

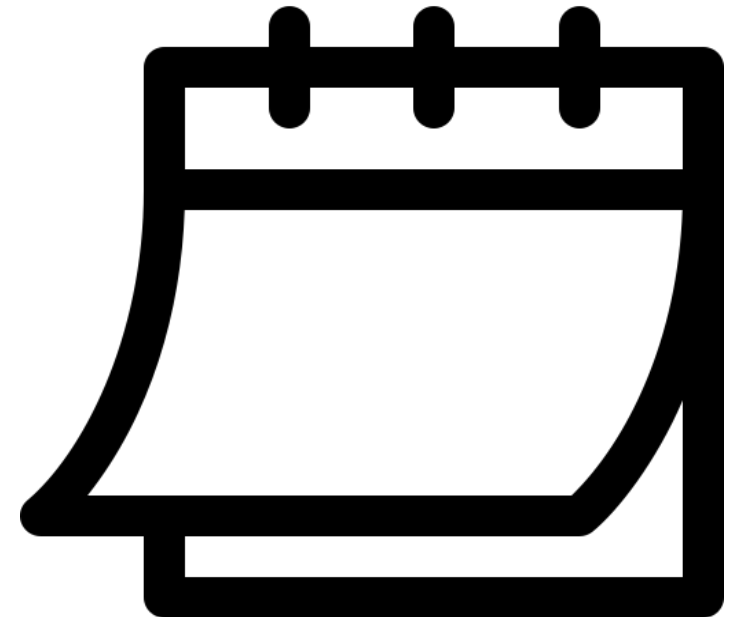
2023	2033	Change
226,775	241,802	+6.2%



Current Wait Times

New Patient Appointments Primary Care

Location	Days
Downingtown	26
Guthriesville	30
Exton	36



Changes in care settings

Patient care is moving out of hospitals into outpatient (ambulatory) settings.

Main Line Health is adapting to rapid changes in health care by providing innovative services, accessible via multiple care delivery options



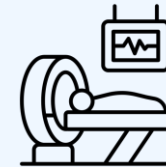
Patients prefer co-located services. Main Line Health delivers on that expectation at our health centers.



Primary & Specialty Care



Urgent Care



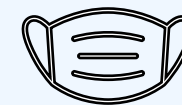
Imaging Services



Laboratory Services



Physical Rehabilitation



Surgery Center

Health Centers

Broomall

Collegeville

Concordville

Exton

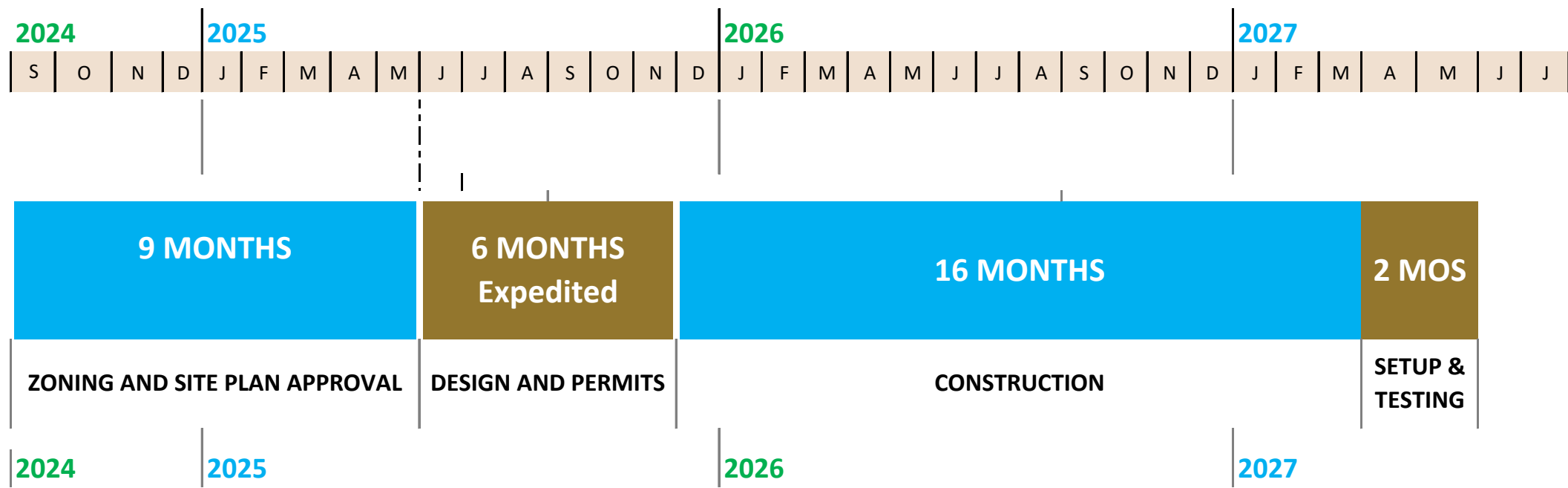
King of Prussia

Newtown Square

+ Downingtown



Timeline



Corner of Lloyd and Manor Avenues





Main Line Health[®]

Questions?

Lankenau Medical Center | Bryn Mawr Hospital | Paoli Hospital | Riddle Hospital | Bryn Mawr Rehab Hospital
Mirmont Treatment Center | HomeCare & Hospice | Lankenau Institute for Medical Research

APPENDIX

